

ReSound GN



# Quick guide

ReSound Vivia 60S

Rechargeable microRIE

# My hearing aid information

**Product:** ReSound Vivia

**Model:** VI60S-DRWC

**Serial number (R):**

---

**Serial number (L):**

---

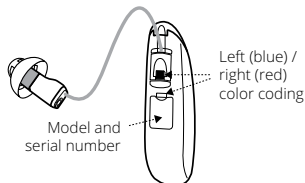
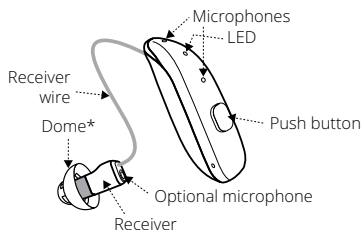
**Battery size:** Lithium-ion

**Programs:**

(if set up by your hearing care professional)

PROGRAM	WHEN TO USE	BEEPS
1		1
2		2
3		3
4		4

# Get to know your hearing aid

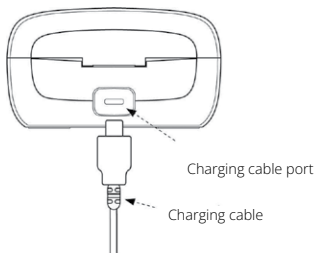
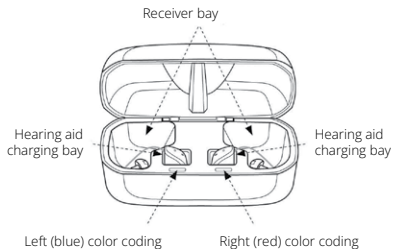


\*Open dome is shown. Yours may look different.

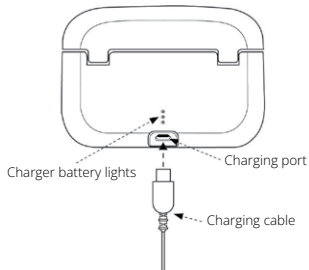
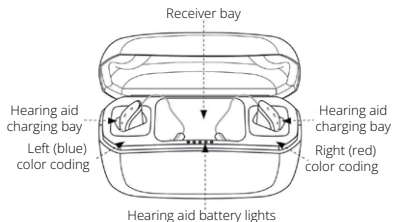
\*\*Inside the battery compartment.

# Get to know your charger

## Standard Charger



## Premium Charger



## Getting started

Your hearing aids are automatically turned on when they are removed from the hearing aid charger. They can also be turned on/off manually by pressing the push button for 5 seconds.

### How to charge your hearing aids

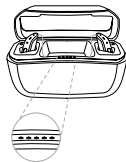
Fully charge your hearing aids before using them the first time.

- Plug the power adapter into a power outlet and connect the charging cable to the hearing aid charger.
- Place both hearing aids in the charging bays. The right side is marked with a red dot and left is marked by a blue dot.
- Place hearing aids so the receivers go into the receiver bay.
- While your hearing aids are charging, the on/off light on your hearing aid will blink slowly. When fully charged, the light remains on (not blinking) until your hearing aid is removed.





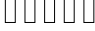
## For premium charger only

When you insert your hearing aids into or remove them from the charger, the five lights on the front of the charger show the charge level of the hearing aid with the LOWEST charge.

They light for 10 seconds and then turn off. If your hearing aids are in the charger, they will continue to charge.



Hearing aid battery indicators:

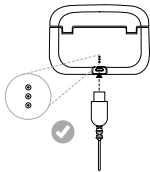
LEDs	Battery level
	0-20%
	20-40%
	40-60%
	60-80%
	80-100%





## How to charge the charger

Plug the power adapter into a power outlet and connect the power cable to the hearing aid charger.

The three lights at the back of the charger show the charge level of the charger. One red blinking light indicates that the battery is low and needs to be recharged. Three green lights mean it is fully charged.

When the charger is fully charged, it can fully charge your hearing aids three times before the charger itself needs to be plugged in and recharged.



LEDs	Battery level
	LED is blinking red. Less than 10% power reserve.
	10-33% charged
	33-66% charged
	66-100% charged

## Flight Mode:

Some airlines prohibit the use of wireless hearing aids (RF transmitters) onboard.

To use Flight Mode, make sure this is activated by your hearing care professional.

Follow these steps to turn on Flight Mode:

1. Turn the hearing aid off by pressing the push button for 5 seconds.
2. Press the push button for 9 seconds.
3. The hearing aid responds with four times double flashes and double-dings for ten seconds.

To deactivate Flight Mode:

1. Turn the hearing aids off and then on.

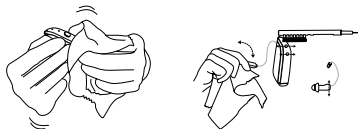
## Regular care & maintenance

### RECOMMENDED

#### Daily:

Clean your hearing aid to keep your hearing aids dry using a soft cloth or tissue.

Clean the receiver tubes and domes using soft cloth on the outside. Do not use water when you are cleaning the receiver tubes.



#### As needed:

Change domes, wax filters, and microphone filters.

## Changing domes

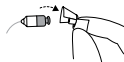
### Standard domes:

1. Remove the dome from the receiver and discard.
2. Push the new dome over the ribbed end of the receiver.
3. Carefully lift the lower part of the dome to verify it is secure with the collar completely covering the ribbed end of the receiver.
4. When placed correctly, the dome will appear slightly angled.



### Tulip domes:

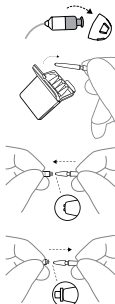
1. Remove the dome from the receiver and discard.
2. Pull the largest petal back. Press the tulip dome over the ribbed end of the receiver.
3. Verify the dome is secure with the collar completely covering the ribbed end of the receiver.
4. Push the larger petal toward the receiver.



## Changing wax filters

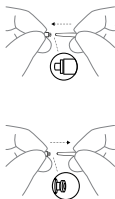
### Removing the old filter:

1. Remove the dome from the receiver.
2. Take out one of the filter tools from the case.
3. Insert the removal tip into the used filter.
4. Pull the filter tool out straight. Do not pull at an angle.



### Inserting the new filter:

1. Insert the other end of the tool with the new filter into the sound outlet.
2. Pull the filter tool out and make sure new filter remains in place.
3. Reattach the dome. Use new dome if necessary.



## Changing microphone filters

### Removing the old filter:

1. Open the filter case and take out one of the filter tools.
2. Insert the removal tip into the used filter.
3. Pull the filter tool straight out. It is important to pull straight and not in an angle.



### Inserting the new filter:

1. Insert the other end of the tool with the new filter into the microphone opening.
2. Pull the filter tool out and make sure new filter is flush with the back of the hearing aids.



## Beep/tone indicators

BEEP/TONE	INDICATION	ACTION REQUIRED
Ding, ding, ding, dong	Low battery	Change battery
Ding (5 or 10)	Hearing aid is starting up	After dings cease, hearing aid is turned on
Ding-ding, ding-ding, etc.	Hearing aid is in flight mode	Use in flight mode if desired, or turn the hearing aids off and then on
Ripple tone	Hearing aid is in streaming mode	Use with wireless accessory or press the push button to exit streaming mode

If there are any other problems not mentioned in this guide, please contact ReSound or your hearing care professional.



# Troubleshooting

SYMPTOM	CAUSE	POSSIBLE REMEDY
No sound	Blocked earmold or tube Blocked wax guard	Clean earmold or tube Replace wax guard or consult your hearing care professional
Not loud enough	Blocked earmold or dome Change in hearing, volume too low Excessive ear wax	Clean earmold, replace dome, replace guard Consult your hearing care professional Consult your hearing care professional
Excessive whistling/ feedback	Incorrect earmold placement Incorrect dome placement Excessive ear wax  If none of the above	Re-insert earmold carefully Re-insert dome Clean guard/consult your hearing care professional Consult your hearing care professional
Wireless does not work	Device may be in flight mode	Turn the hearing aid off and then back on
Hearing aid is not charging	Does the hearing aid sit correctly in the charger?  Is the hearing aid charger charged?	Reinsert the hearing aid in the charger  Plug the charger into a power outlet and connect the charger cable to the hearing aid charger

For more information

**Refer to the user guide included in your hearing aid box.**

**Your hearing care professional can be reached at:** \_\_\_\_\_

\_\_\_\_\_

\_\_\_\_\_

\_\_\_\_\_

View ReSound hearing aid tutorial videos at [youtube.com/resoundus](https://youtube.com/resoundus).

**Manufacturer according to FDA:**

**GN ReSound North America**

8001 E. Bloomington Freeway  
Bloomington, MN 55420  
USA  
1-888-735-4327  
[resound.com](https://resound.com)

**ReSound Government Services**

8001 E. Bloomington Freeway  
Bloomington, MN 55420  
USA  
1-800-392-9932  
[www.resound.com/veterans](https://www.resound.com/veterans)



403048011

403048011 Rev A 2025.02